

Product information

Antibody name: anti-HliA

Product number: H01S-1

Product description: polyclonal antibody;
contains 0.01% NaN₃

Origin: rabbit

Immunogen: synthetic peptide (a. a. 1 – 17) specific
for HliA protein from *Synechocystis* sp. PCC 6803

Immunodetection: Western blot (1 : 2.000 – 1 :
4.000 for ECL)

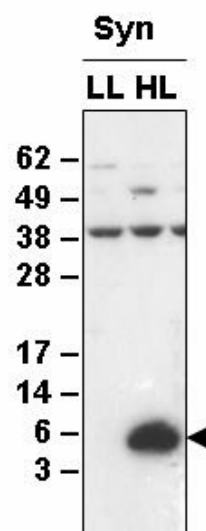
Immunocrossreaction: crossreacts with HliA and
HliB from *Synechocystis* sp. PCC 6803. These two
proteins can be separated by high-resolution gel
electrophoresis.

Storage: short term +4 °C; long term -20 °C. Repeated
freezing and thawing is not recommended.

Preimmune serum (product number H01S-PI): can
be ordered with anti-HliA

Quantity: 100 µl

Background information: HliA/B (SpcA/B) proteins are LHC-similar stress-induced
proteins from cyanobacteria (Funk and Vermaas, 1999, Biochemistry, 38, 9397 – 9404; He et
al., 2001, J. Biol. Chem., 276, 306 – 314). This group of proteins is associated with damaged
photosystem II and can serve as a temporary pigment reservoir while photosystem II
components are being replaced (Yao et al., 2007, J. Biol. Chem., 282, 267 – 276).



Western blot analysis of
membrane proteins from
Synechocystis sp. PCC 6803
with anti-HliA. Proteins were
extracted from cells acclimated
to low (LL) and high light (HL)
regimes. An arrow indicates HliA
protein.

For research purposes only