

Product information

Antibody name: anti-HliA

Product number: H01S-2

Product description: polyclonal antibody;
contains 0.01% NaN₃

Origin: rabbit

Immunogen: synthetic peptide (a. a. 1 – 17) specific
for HliA protein from *Synechocystis* sp. PCC 6803

Immunodetection: Western blot (1 : 2.000 – 1 :
4.000 for ECL)

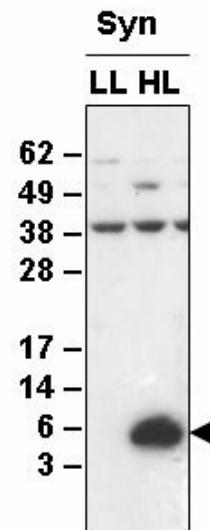
Immunocrossreaction: crossreacts with HliA and
HliB from *Synechocystis* sp. PCC 6803. These two
proteins can be separated by high-resolution gel
electrophoresis.

Storage: short term +4 °C; long term -20 °C. Repeated
freezing and thawing is not recommended.

Preimmune serum (product number H01S-PI): can
be ordered with anti-HliA

Quantity: 300 µl

Background information: HliA/B (SpcA/B) proteins are LHC-similar stress-induced proteins from cyanobacteria (Funk and Vermaas, 1999, *Biochemistry*, 38, 9397 – 9404; He et al., 2001, *J. Biol. Chem.*, 276, 306 – 314). This group of proteins is associated with damaged photosystem II and can serve as a temporary pigment reservoir while photosystem II components are being replaced (Yao et al., 2007, *J. Biol. Chem.*, 282, 267 – 276).



Western blot analysis of membrane proteins from *Synechocystis* sp. PCC 6803 with anti-HliA. Proteins were extracted from cells acclimated to low (LL) and high light (HL) regimes. An arrow indicates HliA protein.

For research purposes only