

Product information

Antibody name: anti-HliD

Product number: H02S-1

Product description: polyclonal antibody;
contains 0.01% NaN₃

Origin: rabbit

Immunogen: synthetic peptide (a. a. 15 – 30) for HliD
protein from *Synechocystis* sp. PCC 6803

Immunodetection: Western blot (1 : 2.000 for ECL)

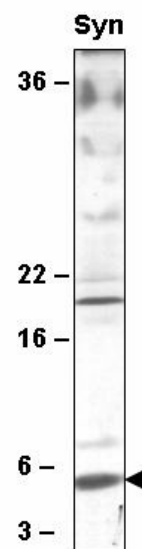
Immunocrossreaction: crossreaction with species
other than *Synechocystis* sp. PCC 6803 but according
to sequence analysis antibody may react with
homologous Hli protein(-s) from *Anabaena*,
Thermosynechococcus, *Gloeobacter*,
Prochlorococcus, *Synechococcus* and *Crocospaera*.

Storage: short term +4 °C; long term -20 °C. Repeated
freezing and thawing is not recommended.

Preimmune serum (product number H02S-PI): can
be ordered with anti-HliD

Quantity: 100 µl

Protein description: HliD (SpcD) protein is LHC-similar stress-induced protein from
cyanobacteria (Funk and Vermaas, 1999, Biochemistry 38, 9397 – 9404; He et al., 2001, J.
Biol. Chem. 276, 306 – 314). HliD is associated with damaged photosystem II and can serve
as a temporary pigment reservoir while photosystem II components are being replaced (Yao
et al., 2007, J. Biol. Chem., 282, 267 – 276).



Western blot analysis of
membrane proteins from
Synechocystis sp. PCC 6803
with anti-HliD

For research purposes only