

Product information

Antibody name: anti-cyclophilin AtCYP37

Product number: I02A-1

Product description: polyclonal antibody;
contains 0.01% NaN₃

Origin: rabbit

Immunogen: synthetic peptide (a. a. 277 – 290)
specific for chloroplast cyclophilin (At3g15520; MIPS)
from *Arabidopsis*

Immunodetection: Western blot (1 : 2.000 for ECL).

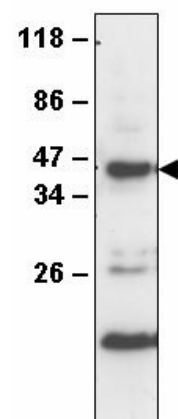
Immunocrossreaction: the crossreaction with other
species was not analysed

Storage: short term 4°C, long term -20°C. Repeated
freezing and thawing is not recommended.

Preimmune serum (product number I02A-PI): can be
supplied with anti-cyclophilin AtCYP37

Quantity: 100 µl

Protein description: Cyclophilin AtCYP37 represents the homologous component of the AtCYP38 (antibody products No.: I01A-1/2), the first complex immunophilin protein identified from higher plants. The AtCYP38 was initially designated as TLP40 (thylakoid lumen protein). It was suggested that AtCYP38 may be involved in the inhibition of the protein phosphatase that dephosphorylates the subunits of the photosystem II. It was shown *in vitro* that the activation of the phosphatase coincides with the release of TLP40 into the thylakoid lumen (Fulgosi et al., EMBO J, 17, 1577 – 1587; Rokka et al., 2000, Plant Phys., 123, 1525 – 1535). The functions of AtCYP37 and AtCYP38 immunophilins and the functional relationship of these proteins are not studied yet.



Immunoblot analysis of
Arabidopsis chloroplast
proteins with anti-
cyclophilin AtCYP37

For research purposes only