

Product information

Antibody name: anti-protease SII0528

Product number: P01S-2

Product description: polyclonal antibody;
contains 0.01% NaN₃

Origin: rabbit

Immunogen: synthetic peptide (a. a. 271 - 286)
specific for protease SII0528 from *Synechocystis* sp.
PCC 6803

Immunodetection: Western blot (1 : 2.000 for ECL)

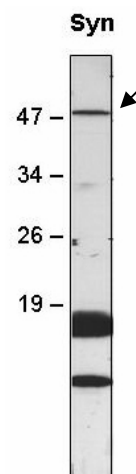
Immunocrossreaction: was not analysed; according
to sequence homology - possible crossreaction with
homologous protease from *Crocospaera watsonii*.

Storage: short term +4 °C, long term -20 °C. Repeated
freezing and thawing is not recommended.

Preimmune serum (product number P01S-PI): can
be ordered with anti-protease SII0528

Quantity: 300 µl

Protein description: SII0528 is a transmembrane metallo-protease from *Synechocystis* sp. PCC 6803. This protease belongs to SP2-type metallopeptidases, the key player of intra-membrane proteolysis. The second homologous component in *Synechocystis* is encoded by *slr1821* gene (corresponding antibody product No.: P02S-1; P02S-2). The protein analysis showed that Slr1821 protein contains one PDF domain, which is involved in the protein-protein interactions, while SII0528 has no PDF domain. These data argues for different functions of Slr1821 and SII0528 proteases.



Western blot analysis of
Synechocystis sp. PCC 6803
membranes with anti-protease
SII0528

For research purposes only