

Product information

Antibody name: anti-protease Slr1821

Product number: P02S-2

Product description: polyclonal antibody;
contains 0.01% NaN₃

Origin: rabbit

Immunogen: synthetic peptide (a. a. 216 – 230)
specific for protease Slr1821 from *Synechocystis* sp.
PCC 6803

Immunodetection: Western blot (1 : 2.000 for ECL)

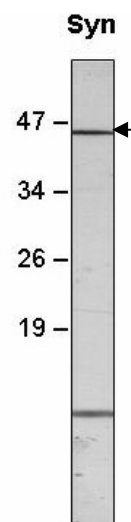
Immunocrossreaction: *Synechocystis* sp. PCC 6803

Storage: short term 4°C, long term -20°C. Repeated
freezing and thawing is not recommended.

Preimmune serum (product number P02S-PI): can
be ordered with anti-protease Slr1821

Quantity: 300 µl

Protein description: Slr1821 is a transmembrane metallo-protease of *Synechocystis* sp. PCC 6803. This protease belongs to SP2-type metallopeptidases, the key player of intra-membrane proteolysis. The second homologous component in *Synechocystis* is encoded by *slI0528* gene (corresponding antibody products No.: P01S-1; P01S-2). The protein analysis showed that Slr1821 protein contains one PDF domain, which is involved in the protein-protein interactions, while SlI0528 has no PDF domain. These data argues for different functions of Slr1821 and SlI0528 proteases.



Western blot analysis of
Synechocystis sp. PCC 6803
membrane proteins with anti-
protease Slr1821

For research purposes only