

## Product information

**Antibody name:** anti-SppA2

**Product number:** P10S-2

**Product description:** polyclonal antibody;  
contains 0.01% NaN<sub>3</sub>

**Origin:** rabbit

**Immunogen:** recombinant SppA2 protease from  
*Synechocystis* sp. PCC 6803

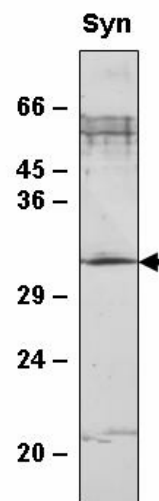
**Immunodetection:** Western blot (1: 2.000 for ECL)

**Immunocrossreaction:** *Synechocystis* sp. PCC  
6803; possible crossreaction with SppA2 protease  
from other cyanobacteria

**Storage:** short term +4 °C; long term -20 °C. Repeated  
freezing and thawing is not recommended.

**Quantity:** 300 µl

**Protein description:** The prokaryotic-specific SppA2 protease has been found in *Synechocystis* sp. PCC 6803 but not in *Arabidopsis thaliana*. SppA2 is twice as small as the major type of SppA protease, named as SppA1, and shares homology to the C-terminal part of SppA1 (Sokolenko A, 2005, Plant Phys., 122, 391 – 398). The functions of SppA2 protease are not studied yet.



Western blot analysis of  
*Synechocystis* sp. PCC 6803  
membrane proteins with anti-  
SppA2

*For research purposes only*