

## Product information

**Antibody name:** anti-polyphenol oxidase

**Product number:** P11A-1

**Product description:** polyclonal antibody;  
contains 0.01% NaN<sub>3</sub>

**Origin:** rabbit

**Immunogen:** recombinant luminal polyphenol oxidase

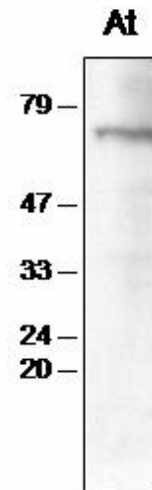
**Immunodetection:** Western blot (1: 1.000 for ECL)

**Immunocrossreactivity:** spinach; other plant species were not tested. Specifically reacts with a 64 kDa polyphenol oxidase from chloroplast thylakoid lumen.

**Storage:** short term +4 °C, long term -20 °C. Repeated freezing and thawing is not recommended.

**Quantity:** 100 µl

**Protein description:** Polyphenol oxidase participates in the response of plants to wounding and herbivore attack, mediated by the octadecanoid wound-signalling pathway. Chloroplast polyphenol oxidase is a 64 kDa nuclear-encoded protein that is targeted to the thylakoid lumen. It was found that polyphenol oxidase is one of the most strongly phosphorylated protein in thylakoid lumen although the role of this protein modification is not known (Sokolenko et al., 1995, FEBS Lett. 371, 176 – 180; Koussevitzky et al., 2004, Planta 219, 412 - 419).



Western blot analysis of spinach chloroplast proteins with anti-polyphenol oxidase