

Product information

Antibody name: anti-D2 protein (PsbD)

Product number: P12S-1

Product description: polyclonal antibody;
contains 0.01% NaN₃

Origin: rabbit

Immunogen: synthetic peptide (a.a. 230 - 240)
specific for PsbD protein from *Arabidopsis*

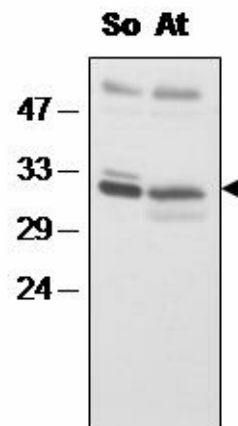
Applications: Western blot (1 : 2.000)

Immunocrossreaction: higher plants (*Arabidopsis*,
spinach, rice and others).

Storage: short term +4°C; long term -20°. Repeated
freezing and thawing is not recommended.

Quantity: 100 µl

Protein description: D1 and D2 are the major constituents of photosystem II reaction centre and bear two tyrosine donors which are placed at a luminal loop of D1 and D2. D2 polypeptide has five transmembrane helices. In both, plants and cyanobacteria, the hydrophobic polypeptides, D1 and D2, bind most of the prosthetic groups that are involved in electron transport.



Western blot of spinach (So) and *Arabidopsis* (At) thylakoids with anti-D2

For research purposes only