

## Product information

**Antibody name:** anti-PsaF

**Product number:** P25A-2

**Product description:** polyclonal antibody;  
contains 0.01% NaN<sub>3</sub>

**Origin:** rabbit

**Immunogen:** synthetic peptide (a. a. 168 – 185)  
specific for *Arabidopsis* PsaF protein

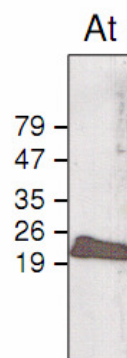
**Applications:** Western blot (1 : 1.000)

**Immunocrossreaction:** *Arabidopsis*; other higher plant species were not tested. Synthetic peptide is highly homologous for PsaF protein from most photosynthetic organisms.

**Storage:** short term +4°C; long term -20°. Repeated freezing and thawing is not recommended.

**Quantity:** 300 µl

**Protein description:** PsaF subunit is a plastocyanin docking subunit of photosystem I. The protein possesses transmembrane and large lumenal domains. The lack of PSI-F resulted in an inability of light-harvesting complex I-730 to transfer energy to the P700 reaction center. The lack of PSI-F also gave rise to disorganization of the thylakoids (Haldrup et al., 2000, J. Biol. Chem., 275, 31211 – 31218).



Western blot analysis of *Arabidopsis* (At) chloroplast proteins with anti-PsaF

*For research purposes only*