

Product information

Antibody name: anti-Rieske FeS protein

Product number: R01A-1

Product description: polyclonal antibody;
contains 0.01% NaN₃

Origin: rabbit

Immunogen: synthetic peptide (a. a. 177 - 190)
specific for Rieske FeS protein from *Arabidopsis*; the
peptide is conservative among most higher plant
species.

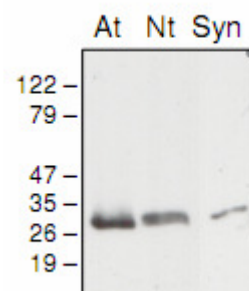
Immunodetection: Western blot (1 : 500 -1.000 for
ECL)

Immunocrossreaction: higher plants, *Synechocystis*
sp. PCC 6803.

Storage: short term +4 °C; long term -20 °C. Repeated
freezing and thawing is not recommended.

Quantity: 200 µl

Protein description: An iron-sulfur Rieske protein belongs to major subunits of
cytochrome b₆f complex of photosynthetic membranes and is encoded by *petA* gene. A
hydrophobic stretch next to N-terminus of the protein is considered as a transmembrane
anchor for the Rieske protein. It had been shown that the Rieske protein is involved in
the quinol binding.



Western blot analysis of
Arabidopsis (At) and tobacco
(Nt) chloroplast and
Synechocystis thylakoid
membrane proteins with anti-
Rieske.

For research purposes only